

McAlpin

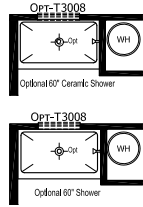
Homes of Merit Community Series

1,387 SQ. FT. (Approximate) 2 Bedroom, 2 Bath



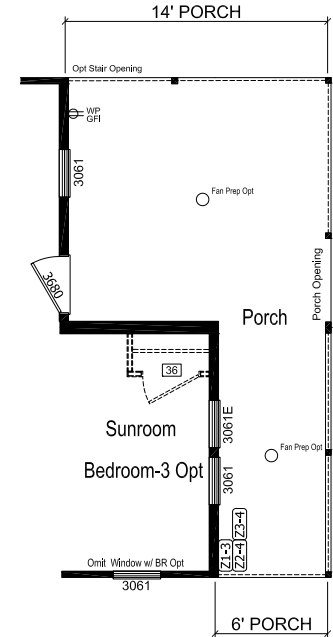
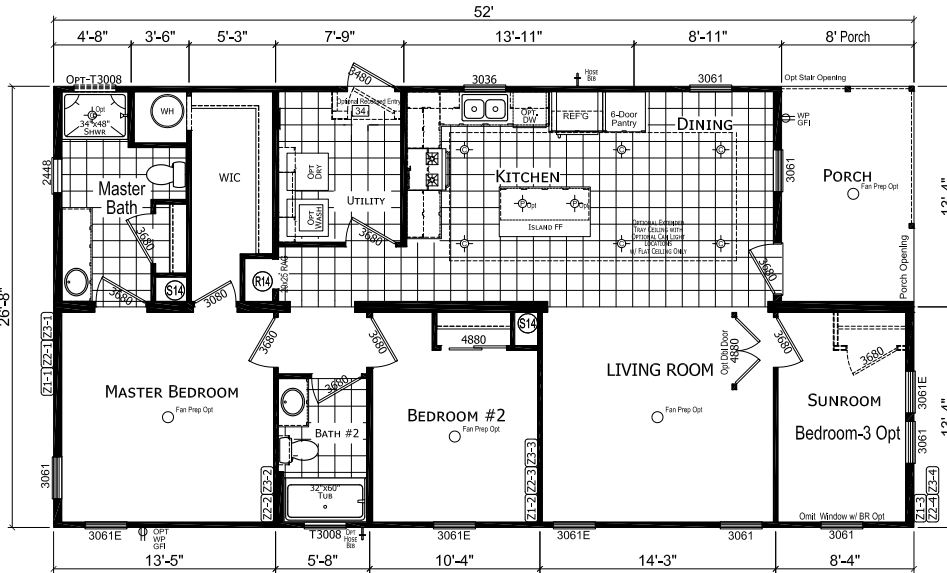
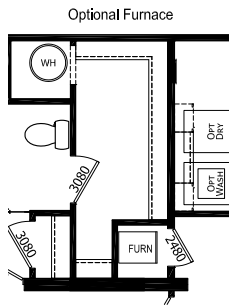
Last Updated: 1-6-26

NOTE: ROOM SIZES INCLUDE WALL DIMENSIONS AND ARE NOT INDICATIVE OF TRUE NET DIMENSIONS

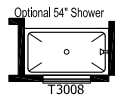


1,283 SQ FT CONDITIONED
 104 SQ FT PORCH
 1,387 SQ FT TOTAL
 1,542 SQ FT (W/ OPT EXTENDED PORCH)

Optional Add
 6ft Porch - Full Width



FACTORY SELECT HOMES
 19280 Cortez Blvd.
 Brooksville, FL 34601



FactorySelectHomes.com | 1-800-716-6337

IMPORTANT: Alta Cima Corp reserves the right to modify, cancel or substitute products or features of this event at any time without prior notice or obligation. Pictures and other promotional materials are representative and may depict or contain floor plans, square footages, elevations, options, upgrades, extra design features, decorations, floor coverings, specialty light fixtures, custom paint and wall coverings, window treatments, landscaping, sound and alarm systems, furnishings, appliances, and other designer/decorator features and amenities that are not included as part of the home and/or may not be available at all locations. Home, pricing and community information is subject to change, and homes to prior sale, at any time without notice or obligation. ©2020 Alta Cima Corp. All rights reserved.

MANUFACTURED BY:



I authorize Factory Select Homes to build my house, per this plan.

X _____
 Customer Signature/Date